



RingGo Car Park

Bury Road Car Park/Chingford

Location Code: 36106

Chingford, City of London Corporation - Epping Forest

Charge Times: All Week 7:00am – 8:00pm

Up to	1 Hour	7:00am – 8:00pm	£1.50	Rover Only
	2 Hours	7:00am – 8:00pm	£2.50	Rover Only
	4 Hours	7:00am – 8:00pm	£4.00	Rover Only
	6 Hours	7:00am – 8:00pm	£6.00	Rover Only

Maximum Stay: 6 Hours.

No return within: 60 Minutes.

Extendable: Up to Maximum stay.

SMS reminder charge: 25p

SMS summary charge: 25p

Duration request reduced to meet cutoff at 20:00

CAR PARK CLOSURE TIMES VARY THROUGHOUT THE YEAR – Please check the gate for today's closing time.

Allows Vehicle(s) 🚗

Total spaces: 280

- 🚗 Car: 280

Advance Parking: No

Postcode: E4 7AZ

Location type: Off street



CITY
OF
LONDON

Epping Forest

Registered Charity



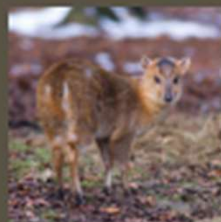
Holly Trail

This circular route follows surfaced Forest paths with short sections across the open grassland of Chingford Plain. The route includes a gentle incline.

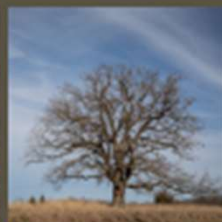
Start point:
Chingford Plain

Time:
Approximately 1 hour

Distance:
2.5 miles / 4 km



Muntjac deer are slightly darker and smaller than fallow deer, about the size of a Labrador. They have a distinctive ginger tint to the forehead and are known for their grunting bark.



There are many veteran trees in Bury Wood, some of them over 400 years old. Characterised by their partly dead wood, hollowing, loose bark and holes, these trees provide important habitats for a variety of wildlife.



Holly is a resilient species which can typically out-compete and grow through other foliage. It is common in the Forest. Its red berries are a food source for birds but toxic to humans.

- | | | |
|----------------------|---------------------------|----------------------|
| ●●●●● Holly Trail | — Easy Access Trail | ■ Epping Forest Land |
| ●●●●● Willow Trail | Ⓐ Easy Access Trail Start | ■ Buffer Land |
| — Path | ● Trail entrance | ← Fishing |
| --- Public bridleway | P Parking | ⌋ Fishing platform |
| | G Golf course | ⌋ Heritage sites |
| | Ⓐ Play area | ⌋ Railway Station |

This is one of 14 green spaces managed by the City of London at little cost to the general public.

Contact us (24 hours a day)

020 8532 1010

@CoLEppingForest

Epping Forest City of London

coleppingforest

eppingforest@cityoflondon.gov.uk

www.cityoflondon.gov.uk/eppingforest

Discover our other waymarked trails at:
www.cityoflondon.gov.uk/eppingforesttrails

- Lime Trail, Wanstead Flats
- Beech Trail, High Beach
- Hornbeam Trail, Leyton Flats
- Gifford Trail, Gifford Wood
- Rowan Trail, Knighton Wood
- Willow Trail, Connaught Water
- Oak Trail, Theydon Bois
- Chestnut Trail, Wanstead Park